

CHELCO NEWS

POWERED *by* YOU

APRIL 2024 | VOL. 29 NO. 4

CHELCO



A Touchstone Energy® Cooperative 

Join us in celebrating lineworkers on April 10

Join us in celebrating lineworkers at CHELCO and at co-ops around the world on April 10. Their tireless efforts, whether in scorching heat, freezing cold, downpouring rain or in the middle of the night, are essential for maintaining our daily lives.

In addition to their day-to-day work, many of our linemen coach little league teams, are heavily involved with their churches and support their communities in many ways.

As we celebrate Lineworker Appreciation Day, we have an opportunity to acknowledge the vital role lineworkers and all co-op employees have, ensuring that electricity remains reliable and accessible, even in the face of adversity.

“We are fortunate to have a team of devoted linemen and support



staff at CHELCO,” CEO Steve Rhodes said. “I appreciate the efforts of everyone on our team, working together to fulfill our mission of providing safe, reliable and affordable electricity to our members.”



Inside

Page 2
CEO Insights: Clearing the path to sustained reliability

Page 3
Load control efforts save \$260K in January

Page 4
Join us for Member Appreciation at Niceville HS

Did you know...

CHELCO offers decorative and street lighting to meet your needs. Whether you're a homeowner, business or developer, we have the lighting solutions for you. If you are interested in having an outdoor light installed at your home, business or development, visit CHELCO.com/lighting or call us at (850) 892-2111.



CEO Insights: Clearing the path to sustained reliability

Trees are majestic, beautiful and good for the soul. But we also know that our members depend on us to deliver reliable power to their homes and businesses. That's why CHELCO strives to balance maintaining the beautiful surroundings we all cherish with ensuring reliable electricity. You might not realize it, but there are several benefits to regular tree trimming.

Reliability

Keeping power lines clear of overgrown vegetation improves service reliability. After all, we've seen the whims of Mother Nature during severe weather events with fallen tree limbs taking down power lines and utility poles. While many factors can impact power disruptions, about half of all outages can be attributed to overgrown vegetation. This is why you sometimes see crews from our wholly-owned subsidiary, Southland Utility Services, out in the community trimming trees near power lines. Our trimming crews have been trained and certified based on

the latest industry standards.

In fact, all U.S. electric utilities are required to trim trees that grow too close to power lines. Scheduled trimming throughout the year keeps lines clear from overgrown or dead limbs that are likely to fall, and we are better able to prepare for severe weather events. Plus, we all know it's more cost-effective to undertake preventative maintenance than it is to make repairs after the fact.

Safety

Working near power lines can be dangerous, and we care about your safety and that of our lineworkers. For example, if trees are touching power lines in our members' yards, they can pose a grave danger to families. If children can reach those trees, they can potentially climb into a danger zone. Electricity can arc, or jump, from a power line to a nearby conductor such as a tree.

Any tree or branch that falls across a power line creates a potentially dangerous situation. A proactive

approach lessens the chances of fallen trees during severe weather events that make it more complicated and dangerous for lineworkers to restore power.

Affordability

As a co-op, CHELCO always strives to keep costs down for our members. If trees and other vegetation are left unchecked, they can become overgrown and expensive to correct. A strategic vegetation management program helps keep costs down for everyone.

Smart Planting

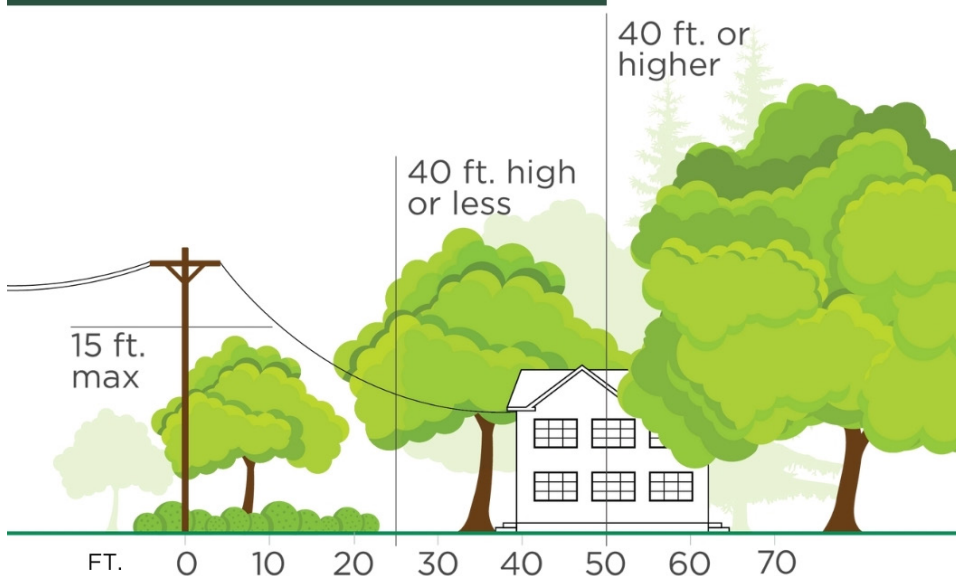
When it comes to vegetation management, there are ways you can help too. When planting new trees, make sure they're planted a safe distance from overhead power lines. Medium-height trees (40 ft. or smaller) should be planted at least 25 ft. from power lines. Taller trees (over 40 ft.) should be planted at least 50 ft. from power lines. You can also practice safe planting near pad-mounted transformers. Plant shrubs at least 10 ft. from the transformer door and 4 ft. from the sides. If your neighborhood has underground lines, remember to contact 811 before you begin any project that requires digging.

Additionally, if you spot an overgrown tree or branch that's dangerously close to overhead lines, please let us know by calling (850) 892-2111.

We have deep roots in our community, and we love our beautiful surroundings. It takes a balanced approach, and our vegetation management program is a crucial tool in ensuring service reliability.

Steve Rhodes,
Chief Executive Officer

PLANT TREES IN THE RIGHT PLACE.



Load control efforts save \$260K in January



CHELCO Energy Services and Government Accounts Coordinator Tina Rushing met with Walton Correctional Institution's Safety Sergeant Charles Adkison, Warden Tony Knight and Facilities Maintenance Supervisor Justin Armstrong to thank them for running their generators during peak demand. WCI, Winn-Dixie of Bluewater Bay and CHELCO each ran their generators to reduce system load.

Once again, load control efforts have saved our members hundreds of thousands of dollars.

What is Load Control?

Any time that we expect extremely cold winter mornings or hot summer afternoons, we will activate load control protocol. These efforts combine several things, including voltage reduction, asking large accounts to run their generators and asking members to voluntarily reduce high usage activities, such as running hot water or using large appliances.

Why is Load Control important?

At CHELCO, we are required to have a greater energy capacity than our expected "peak" for the year. Trimming peak demand saves all members money, because greater system peaks require more capacity, which leads to extensive upgrades and increased rates paid to our wholesale power provider, PowerSouth Energy Cooperative. If we can work together to reduce peak demand, we can avoid these expensive upgrades and increased wholesale rates.

How did Load Control efforts go in January?

During the 7 a.m. hour of Jan. 17, CHELCO's coincident usage peak with PowerSouth, our wholesale power provider, occurred with a demand of 313 megawatts (MW), a new all-time high, surpassing our previous all-time peak of 296 MW.

Thanks to our demand response efforts, including voltage reduction, key accounts running generators, load control switches being activated and members voluntarily reducing high-energy activities, we managed to avoid just over \$260,000 in wholesale power costs for January, due to a total demand reduction of nearly 26 MW.



Energy Advisor Tyler Jackson (right) met with Winn-Dixie Store Manager Billy Norwood to thank them for running their generators.

CHELCO Charity Golf Tournament

The 2024 CHELCO Charity Golf Tournament will be held Friday, May 24, at Blackstone Golf Course in Mossy Head.

Registration will open at 9 a.m. with a shotgun start at 10, and the format is a four-man scramble.

Team Registration and Sponsorship forms are available online at CHELCO.com/golf.

Please contact us at communications@chelco.com if you have any questions.

***Field limited to first 18 teams**



Recipe of the Month



Butterfinger Cake

Satisfy your sweet tooth with a delicious homemade dessert. Learn this recipe and more at CHELCO.com/recipes.

CHELCO is governed by a nine-member board of trustees: Lee Perry, District 1; Terry Pilcher, District 2; Reese Harrison, District 3; Brady Bearden, Vice President, District 4; Ronald Jones, District 5; Gerald Edmondson, President, District 6; Bert Prutzman, Assistant Secretary/Treasurer, District 7; Gayle Hughes, Secretary/Treasurer, District 8; Dwayne Davis, District 9.

Four local students win Youth Tour competition



CEO Steve Rhodes, winners Asher Kimbrough (Crestview), Jack Beauchamp (Niceville), Jonas Mosley (Rocky Bayou), Emery Hagan (Paxton), Youth Tour Coordinator Tyler Wood.

Four local students recently won CHELCO's Youth Tour competition and will embark on a trip to Washington, D.C., in June as part of the National Rural Electric Cooperatives Association (NRECA) Youth Tour program. Youth Tour is open to high school juniors whose parents or guardians are CHELCO members, and representatives are chosen by local schools to attend the statewide Youth Tour program in Tallahassee each year in February. Of the students who attend the Tallahassee Youth Tour, four are selected to represent CHELCO in Washington, D.C., by creating a video recapping their Youth Tour experience. To learn more, visit CHELCO.com/Youth-Tour.

Energy Efficiency Tip of the Month

Opening up windows and allowing fresh air into your home on pleasant days offers many benefits for both your well-being and your energy budget. Firstly, it improves indoor air quality by allowing stagnant air, pollutants and odors to be replaced with fresh, oxygen-rich air from outside.

Additionally, natural ventilation helps regulate indoor temperatures, reducing the reliance on heating and cooling systems and lowering energy costs. Furthermore, the influx of natural light can elevate mood, increase productivity and foster a greater connection with nature.



IS \$25 YOURS?

If the account number below matches yours, call us at (850) 892-2111 or stop by any CHELCO office to claim a \$25 credit on your next bill! This month's winner is:

Chandler - 900088916

CHELCO PRESENTS MEMBER APPRECIATION NIGHT

AT NICEVILLE HIGH SCHOOL
EAGLES BASEBALL

VS. SOUTH WALTON SEAHAWKS

★ **FREE** ★ FOR CHELCO MEMBERS

THURSDAY
4PM JR. VARSITY

6:30PM VARSITY



800 E John Sims Pkwy. | for more info
Niceville, FL 32578 | 850-307-1121

For unclaimed capital credits, visit CHELCO.com/capital-credits.